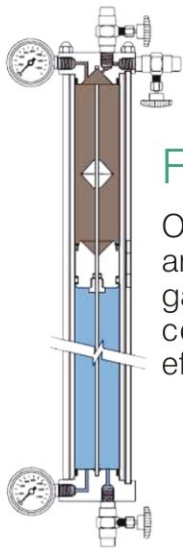


## DownHole Data Acquisition

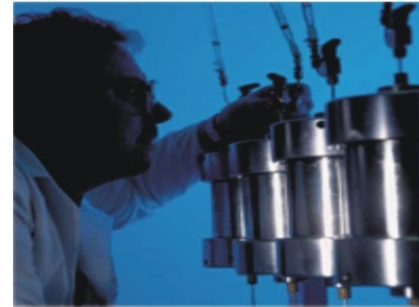


In line with the Eastern Testing Services strategy for equipment procurement, it has partnered with Canada Tech for downhole gauge. Canada Tech was established in 1992 as a specialised world leading technology company that develops and manufactures innovative tools, memory gauges and instruments for the oil and gas industry.



### Fluid Sampling

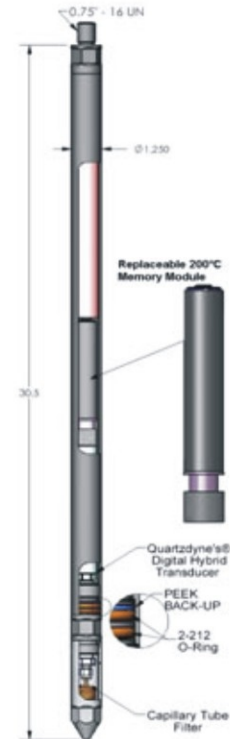
Our advanced sampling determine the amount of liquid carry over in the separator gas line along with PVT analysis when conditions are stable and separation efficiency is poor.



Downhole Data Acquisition-Quartz, "DMB", QM200, 1.25" OD

Temperature Specifications		
Standard Ranges	25°C-150°C	25°C-177°C, 200°C
Accuracy <sup>1</sup> (°C)	0.5	0.5
Typical Accuracy (°C)	0.15	0.15
Achievable Resolution (°C/sec)	<0.005	<0.005
Repeatability (°C)	<0.01	<0.01
Average Sensitivity (Hz/°C)	180	180
Frequency Output Range (kHz)	10.70	10.70
Drift at 177°C (°C/year)	<0.1	<0.1

Pressure Specifications			
Sensor	Thickness	Shear Mode	Quartz Resonator
Standard Ranges 1	0-10,000 psi	0-16,000 psi	0-20,000 psi
Available Calibration Temp, Ranges	25°C-150°C	25°C-150°C 177°C 200°C	25°C-150°C 177°C 200°C
Accuracy <sup>1</sup> (%FS)	0.015	0.02	0.02
Typical Accuracy (%FS)	0.012	0.015	0.015
Achievable Resolution <sup>1</sup> (psi/sec)	<0.006	<0.008	<0.008
Repeatability (%FS)	<0.01	<0.01	<0.01
Nominal Sensitivity (Hz/psi)	2.8	2.5	2.5
Drift at 14psi and 25°C (%FS/year)	Negligible	Negligible	Negligible
Drift at Max. Pressure & Temp. (%FS/year)	0.02	0.02	0.02



### Applications



- Production Testing
- Interference Testing<sup>1</sup>
- Well Testing
- Well Stimulation